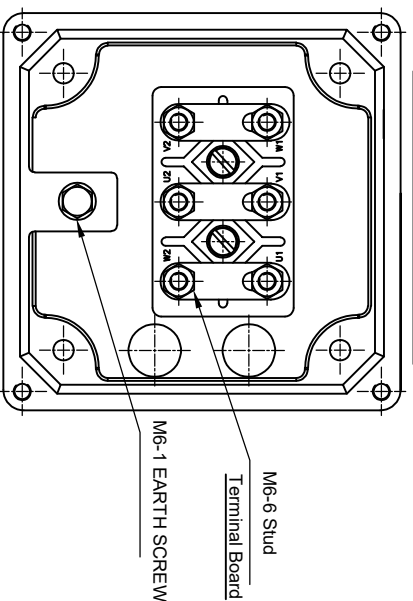
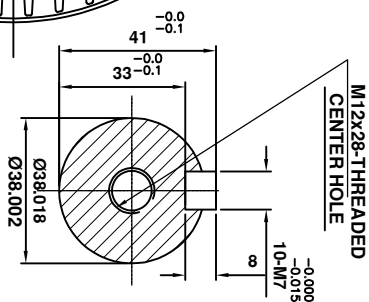


TERMINAL BOX DETAILS



EXTENSION DETAILS



NAME PLATE DETAILS (IS 12615 : 2018)	CE
MARKING	CE
Frame	LE 132 S
Duty	S1
Class of insulation	F
Frequency, Hz	50 ±5%
Pole	2
Connectoin	Delta
Output in KW	5.5
Voltage in volts	415 ±10%
F.L.Current in Amps	11
Speed in RPM	2920
% Efficiency	89.2(IE3)
Protection	IP-55
Power Factor	0.89
BRG DE	6308 ZZC3
BRG NDE	6307 ZZC3

ALL DIMENSIONS ARE IN mm

GENERAL TOLERANCES

LINEAR DIMENSIONS (MACHINING)	GENERAL TOLERANCES				
	ABOVE 0	30	100	300	1000
UP TO	30	100	300	1000	
TOL	±0.2	±0.3	±0.5	±0.8	

ANGLES ± 1/2°

PREPARED	K.SP	12-06-2024
CHECKED	ASP	12-06-2024
APPROVED	K.K.N	12-06-2024
SCALE	NTS	
QUANTITY	1 No	
MATERIAL		
WEIGHT IN KG.		
ROUGH FINISHED		
RAW MATERIAL CODE		

LAKSHMI ELECTRICAL DRIVES LIMITED
COIMBATORE - 641 004

GA DRAWING
5.5 kW, 2 POLE, IE3



MODEL	LE 132S	DRG.No.	LEH13223001	REV.	00
-------	---------	---------	-------------	------	----