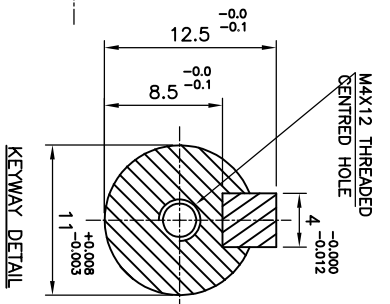
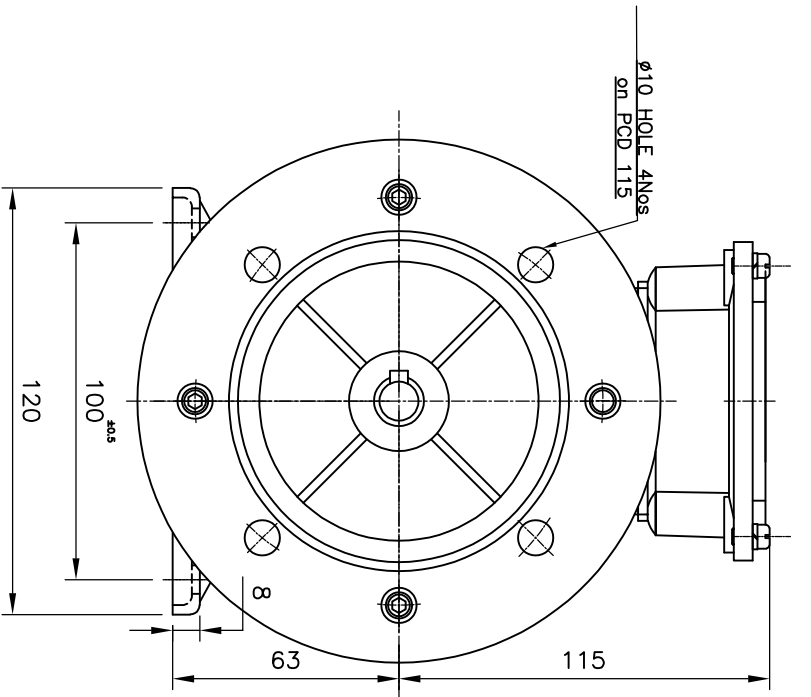
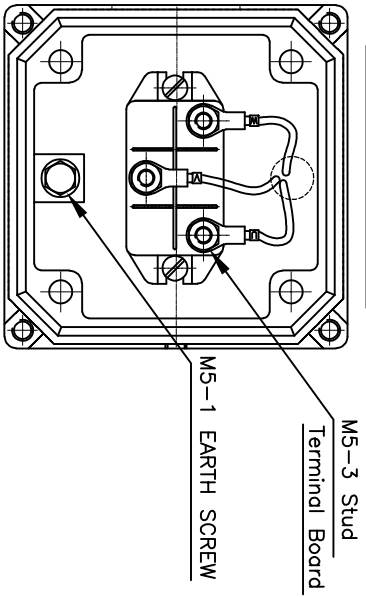


TERMINAL BOX DETAILS



NAME PLATE DETAILS (S12615:2018)	
Marking	CE
Frame	LE 63
Duty	S1
Class of Insulation	F
Frequency, Hz	50±5%
Pole	2
Connection	STAR
Output in kW	0.25
Voltage in Volts	415±10%
F.L.Current in Amps	1
Speed in RPM	2750
% Efficiency	69.7(IE3)
Brg.(DE)	6202 2RS C3
Brg.(NDE)	6202 2RS C3
Power Factor	0.64
Protection	IP55

ALL DIMENSIONS ARE IN mm

GENERAL TOLERANCES

LINEAR DIMENSIONS (MACHINING)	GENERAL TOLERANCES				
	ABOVE 0	30	100	300	1000
UP TO	30	100	300	1000	
TOL	±0.2	±0.3	±0.5	±0.8	

ANGLES ± 1/2°

PREPARED	CHECKED	APPROVED	SCALE	QUANTITY	MATERIAL	WEIGHT IN Kg.	SIGN/ DATE
K.SP	ASP	K.K.N	NTS	1 No	-		

ALTERATIONS

LAKSHMI ELECTRICAL DRIVES PRIVATE LIMITED
COMBATORRE - 641 004

G.A DRAWING
0.25KW,2P,IE3

MODEL	LE 63	DRG.No	LEH06326002	REV.	NO
				00	