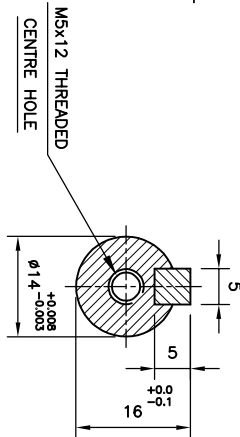


TERMINAL BOX DETAILS

M5-3 Stud  
Terminal Board  
M5-1 EARTH SCREW



NAME PLATE DETAILS (S12615:2018)	
Marking	CE
Frame	LE 71
Duty	S1
Class of Insulation	F
Frequency, Hz	50±5%
Pole	2
Connection	STAR
Output in kW	0.55
Voltage in Volts	415±10%
F.L.Current in Amps	1.6
Speed in RPM	2800
% Efficiency	77.8(IE3)
Brg.(DE)	6203 2RS C3
Brg.(NDE)	6203 2RS C3
Power Factor	0.8
Protection	IP55

ALL DIMENSIONS ARE IN mm

GENERAL TOLERANCES

LINEAR DIMENSIONS (MACHINING)	GENERAL TOLERANCES				
	ABOVE 0	30	100	300	1000
UP TO	30	100	300	1000	
TOL	±0.2	±0.3	±0.5	±0.8	

ANGLES

± 1/2°

DCR NO

ZONE

ALTERATIONS

SIGN/ DATE

WEIGHT IN kg.

ROUGH FINISHED

MODEL

LE 71

DRG.No. LEH07126002

REV. NO

LAKSHMI ELECTRICAL DRIVES PRIVATE LIMITED  
COMBATORRE - 641 004

G.A DRAWING  
0.55KW, 2POLE, IE3



1 2 3 4 5 6 7 8 9 10 11 12 13 14 15 16 17 18 19 20 21 22 23 24 25 26 27