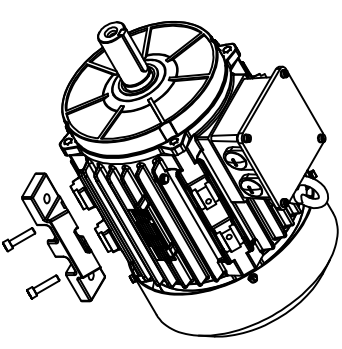
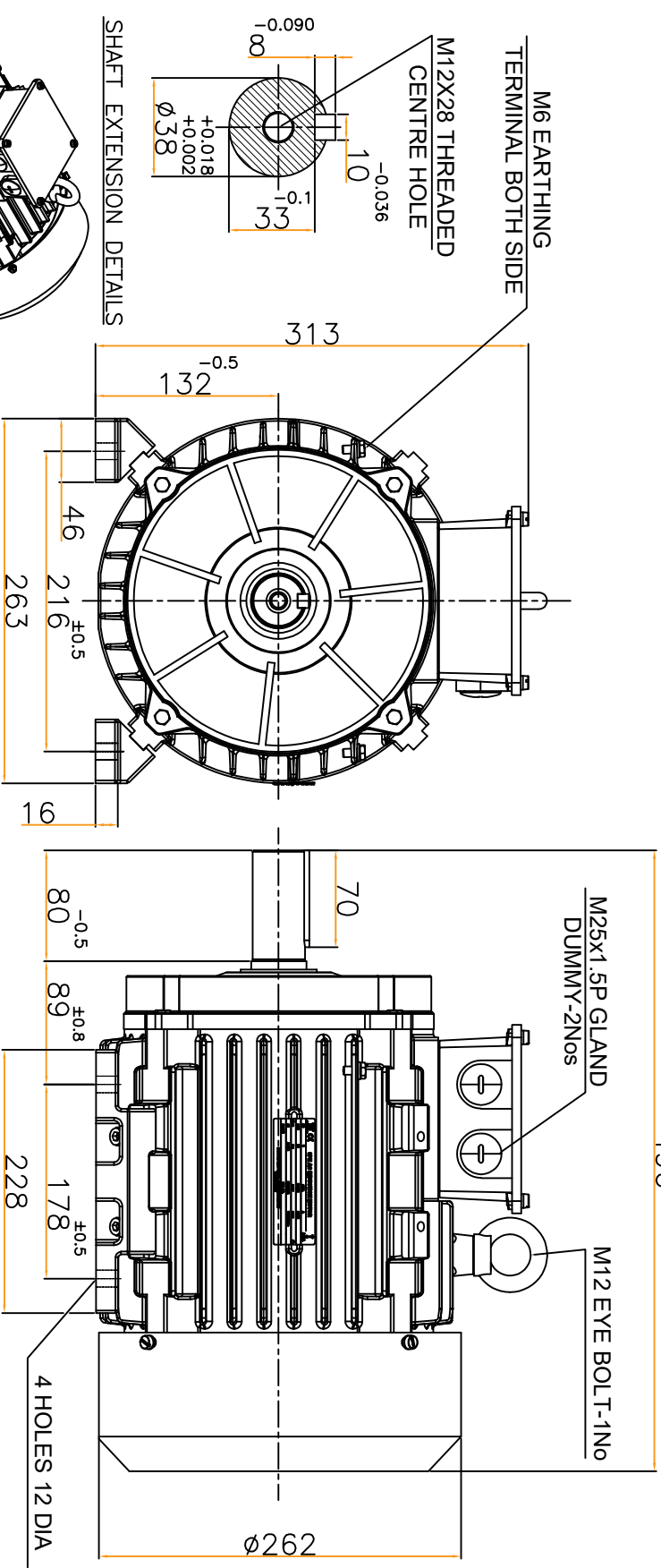
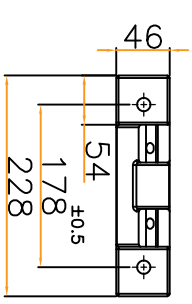
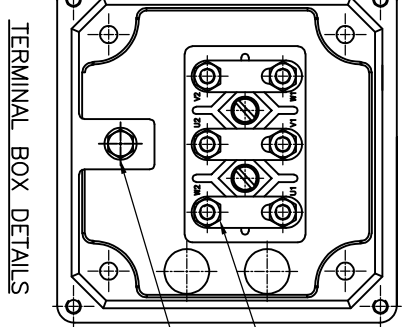


±5.0  
496



**MATERIAL OF CONSTRUCTION:-**  
 BODY : CAST IRON  
 END COVERS : CAST IRON  
 SHAFT : EN8



ALL DIMENSIONS ARE IN mm		GENERAL TOLERANCES		DCR NO	ZONE	ALTERATIONS		SIGN/ DATE	WEIGHT IN K9.	SAP CODE: 70-3336	
LINEAR DIMENSIONS (MACHINING)	ABOVE	0	30	100	300			PREPARED	KSP	07-06-2024	LAKSHMI ELECTRICAL DRIVES LIMITED COIMBATORE - 641 004
	UPTO	30	100	300	1000			CHECKED	H.H	07-06-2024	
TOL		±0.2	±0.3	±0.5	±0.8			APPROVED	KKN	07-06-2024	
ANGLES		± 1/2°						SCALE	NTS		
		GA DRAWING						QUANTITY	1 No.		
		7.5 kW, 4 POLE, IE3, B3						MATERIAL	-		
		MODEL LE 132M						DRG.No	LEH13243004		
		REV. NO									

NAME PLATE DETAILS (S 12615 : 2018)	CE
MARKING	LE 132M
FRAME	S1
Duty	F
Class of Insulation	50 ±5%
Frequency, Hz	4
Pole	DELTA
Connection	7.5
Output, kW	415 ±10%
Voltage, V	15.4
F.L.Current, A	1450
Speed, rpm	90.4 (IE3)
% Efficiency	1
Service Factor	0.82
Power Factor	IP55
Protection	6308 ZC3
BRG DE	6307 ZC3